

MODELS

FULL BLACK



Sunbrella
Black

RAL 9005
Black

ARCHITECTURE

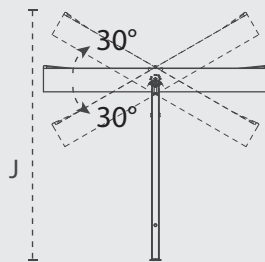
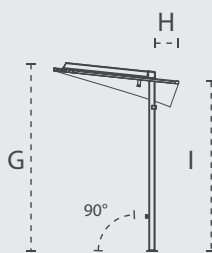
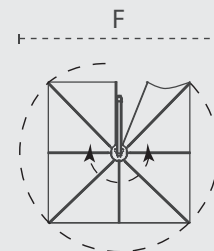
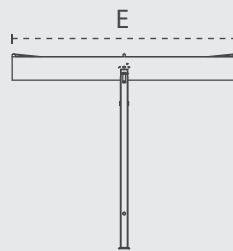
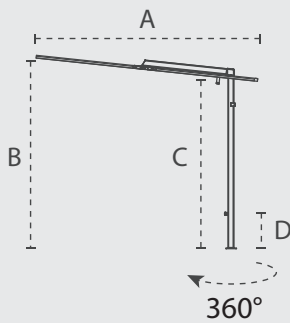


Sunbrella
Marble

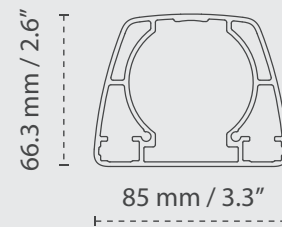
RAL 9018
Papyrus
white

DIMENSIONS

NANO UX

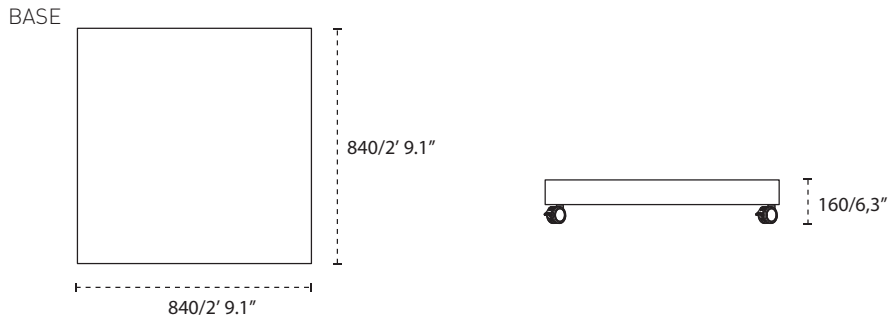


POLE / ARM

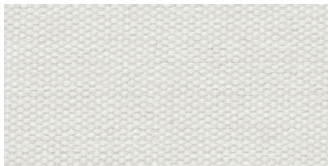


+/- 2% Tolerance	A cm/ft	B cm/ft	C cm/ft	D cm/ft	E cm/ft	F cm/ft	G cm/ft	H cm/ft	I cm/ft	J cm/ft
2.5m/8' 2"	250/8' 2"	210/7' 2.6"	190/6' 2.8"	39/1' 3.4"	250/8' 2.4"	355/11' 7.8"	210/6' 10.7"	30/ 11.8"	190/6' 2.8"	265/8' 8.3"

DIMENSIONS BASE (MM/INCH)



MATERIALS



FABRIC

Sunbrella – 100% Acryl 260 gr/m²
More details – see spec sheet Fabrics



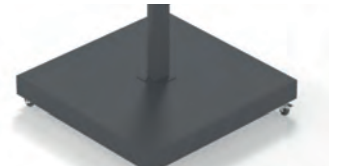
RIBS

Aluminum ribs



POLE, ARM AND HANDLES

Aluminum powder coated RAL 9005
Black or RAL 9018 Papyrus White



BASE

Base: hot dip galvanised steel
Cover: Aluminum Powder coated
RAL 9005 or RAL 9018

PACKAGING & TRANSPORT

NANO UX	L (cm)	W (cm)	H (cm)	Weight (kg)	L (")	W (")	H (")	Weight (lbs)
Umbrella box	205	30	15	25	6' 8.7"	11.8"	5.5"	55
Base+Base cover	90	90	10	15	2' 11.4"	2' 11.4"	3.9"	33

NICE TO KNOW

- Spare parts available
- Designed and manufactured in Belgium
- Warranty between 15 and 2 years, see Warranty Sheet
- Download manual (QR-code included)
- Storage bag included (Sunbrella Flanelle)
- Wind speeds up to 5 beaufort, 30 km/h, 18 mph when base is permanently fixed
- Tested at TU Delft

ELMINA.[®]
môj životný štýl

ELMINA Bratislava
OC Light Park
Račianska 90, Bratislava
tel.: 02/634 522 59
www.elmina.sk

Ceny BEZ DPH